

Environment

Site Data	
Elevation ASL (m)	350.00
Building Data	
Wind Code	AS/NZS 1170.2-2021
Code	AU
Building Function	E
Importance Level	2
Annual prob. of exceed. - Wind	1:500
Annual prob. of exceed. - Snow	1:150
Roof Type	Gable
Building Length (m)	4.00
Building Width (m)	4.00
Avg. Roof Height (m)	3.00
Max. Roof Height (m)	3.20
Enclosed?	Partly Enclosed

For complete job environment details, refer to the job Environments Report.

Load Summary

Load	Value
Loaded Width (Actual) (mm)	495.686
Roof Dead Load (kPa)	0.100
Roof Live Load (kPa)	0.250
Roof Point Load (kg)	152.957
Ceiling Dead Load (kPa)	0.100
Ceiling Live Load (kPa)	0.100
Ceiling Point Load (kg)	10.197

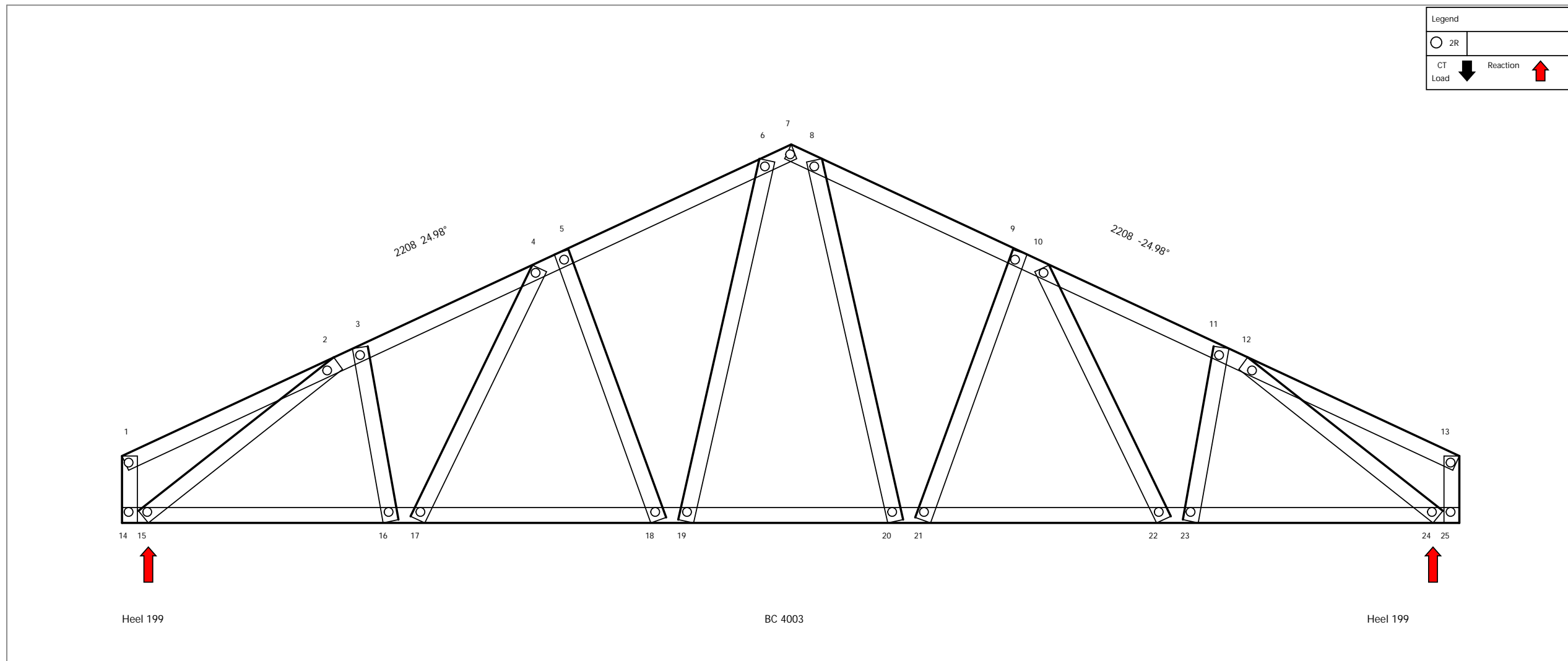
Truss Summary

Item	Value
Level	1
Steel	C90.46-1.15BMT-G350
Width (m)	4.00
Height (m)	1.13
Loaded Width (mm)	495.686
Purlin Spacing (mm)	500.000
Batten Spacing (mm)	600.000
BC Span (m)	4.00
Steel (m)	16.95
Weight (kg)	31.44
Max. Deflection Up (mm)	0.003
Max. Deflection Down (mm)	-0.066
Max CR - Top Chord	0.710
Max CR - Bottom Chord	0.500
Status	Pass

Node Deflections Summary

	Maximum (mm)	Limit (mm)	Ratio
Dead Load	-0.040	12.000	0.003
Live Load	-0.066	15.382	0.004
Wind Load	0	0	0

Truss T3



Disclaimer

Job Name	RapidBAU MODULO
Job Number	
Detailer	
Company	Rapidbau.com
Date	31 Mar 2023
Project File	4m_sedlova_vaznik-25st.sdp

